



Install solar powered radar speed sign facing east bound traffic at 561 Elysian Fields Road

Install 3x sets of speed cushions between 370 and 430 Lynn Ave. See page 4 & 5 for details.

NO.	DATE	BY	DESCRIPTION
1			
2			
3			
4			

CALDWELL ABBAY HALL
TRAFFIC CALMING
DAVIDSON COUNTY, TENNESSEE

Metro Nashville
Public Works
Improving the Quality of Life for Nashvillians and our Visitors



DATE:	05/13
DESIGNED BY:	DJH
DRAWN BY:	DJH
SUPERVISED BY:	
CHECKED BY:	
PROJ. NO.	19-CAH



Install all way stop at Danby Dr and Lynn Dr. Going to Traffic and Parking Commission June 10th

Install 2x sets of speed cushions between 322 and 308 Lynn Ave. See page 6 for details.



Metro Nashville
Public Works
 Improving the Quality of Life for Nashvillians and our Visitors

CALDWELL ABBAY HALL
 TRAFFIC CALMING
 DAVIDSON COUNTY, TENNESSEE

NO.	DATE	BY	REVISIONS DESCRIPTION
1			
2			
3			
4			

DATE:	05/13
DESIGNED BY:	DJH
DRAWN BY:	DJH
SUPERVISED BY:	
CHECKED BY:	
PROJ. NO.:	19-CAH



Install solar powered radar speed sign facing west bound traffic at 497 Elysian Fields Road (Coventry Square Apartments)

Double yellow center line on Corning Drive from Lynn to Welshwood to control traffic location on curve

Install 2x sets of speed cushions between 4839 and 4864 Lynn Ave. See page 7 for details.

ABBAY DR

LYNN DR

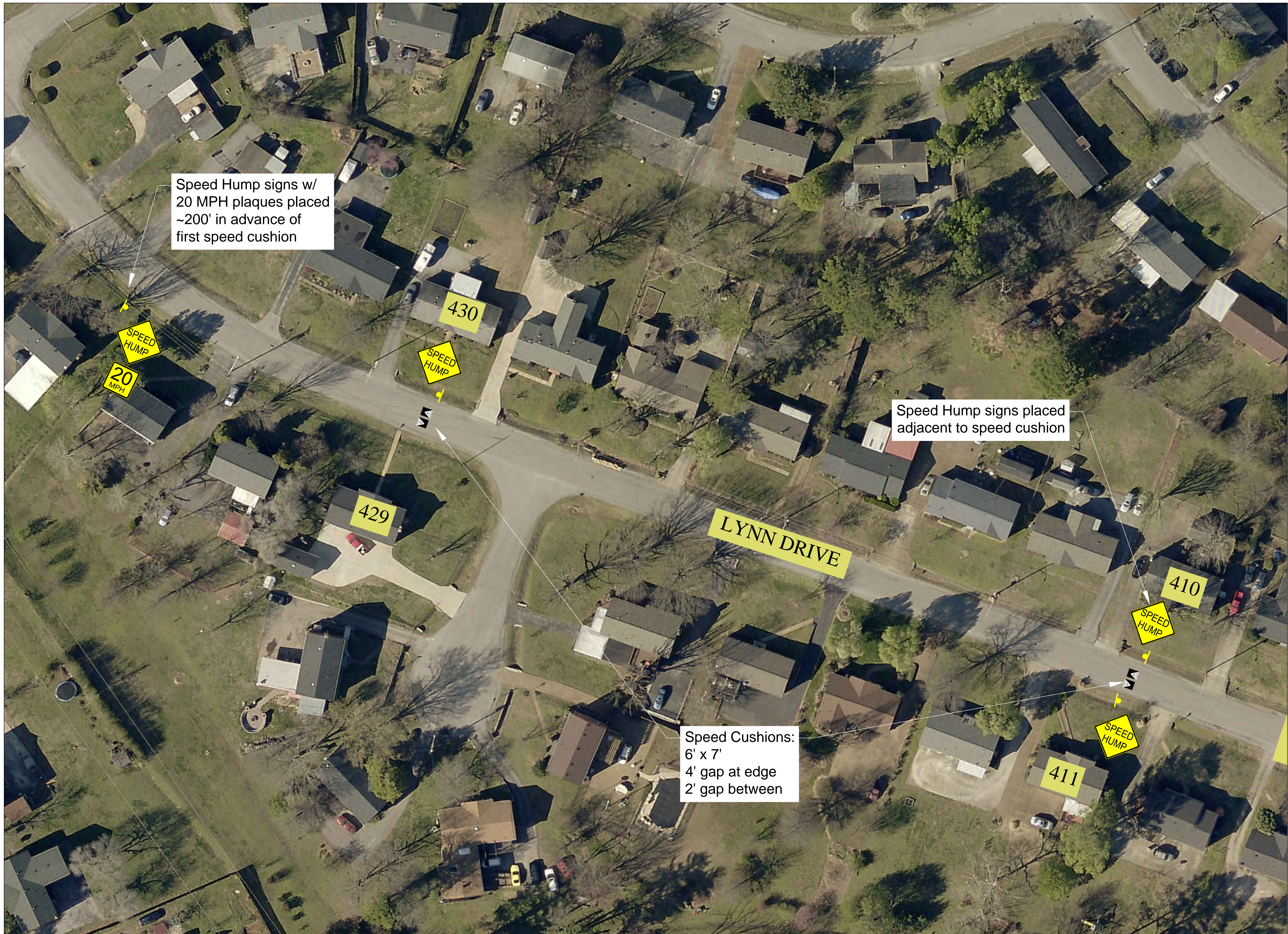
NO.	DATE	BY	DESCRIPTION
1			
2			
3			
4			

CALDWELL ABBAY HALL
TRAFFIC CALMING
DAVIDSON COUNTY, TENNESSEE

Metro Nashville
Public Works
Improving the Quality of Life for Nashvillians and our Visitors



DATE:	05/13
DESIGNED BY:	DJH
DRAWN BY:	DJH
SUPERVISED BY:	
CHECKED BY:	
PROJ. NO.:	19-CAH



NO.	DATE	BY	DESCRIPTION
1			
2			
3			
4			

CALDWELL ABBAY HALL
TRAFFIC CALMING
DAVIDSON COUNTY, TENNESSEE

Metro Nashville
Public Works
Improving the Quality of Life for Nashvillians and our Visitors



DATE:	05/13
DESIGNED BY:	DJH
DRAWN BY:	DJH
SUPERVISED BY:	
CHECKED BY:	
PROJ. NO.:	19-CAH



NO	DATE	BY	DESCRIPTION
1			
2			
3			
4			

CALDWELL ABBAY HALL
 TRAFFIC CALMING
 DAVIDSON COUNTY, TENNESSEE



DATE:	05/13
DESIGNED BY:	DJH
DRAWN BY:	DJH
SUPERVISED BY:	
CHECKED BY:	
PROJ. NO.	19-CAH



Speed Cushions:
6' x 7'
4' gap at edge
2' gap between

LYNN DRIVE

Speed Hump signs w/
20 MPH plaques placed
~150' in advance of
first speed cushion

NO.	DATE	BY	DESCRIPTION
1			
2			
3			
4			

CALDWELL ABBAY HALL
TRAFFIC CALMING
DAVIDSON COUNTY, TENNESSEE



DATE:	05/13
DESIGNED BY:	DJH
DRAWN BY:	DJH
SUPERVISED BY:	
CHECKED BY:	
PROJ. NO.:	19-CAH



NO.	DATE	BY	DESCRIPTION
1			
2			
3			
4			

CALDWELL ABBAY HALL
TRAFFIC CALMING
DAVIDSON COUNTY, TENNESSEE



DATE:	05/13
DESIGNED BY:	DJH
DRAWN BY:	DJH
SUPERVISED BY:	
CHECKED BY:	
PROJ. NO.:	19-CAH